



# SD TRACK

## Installation Guide

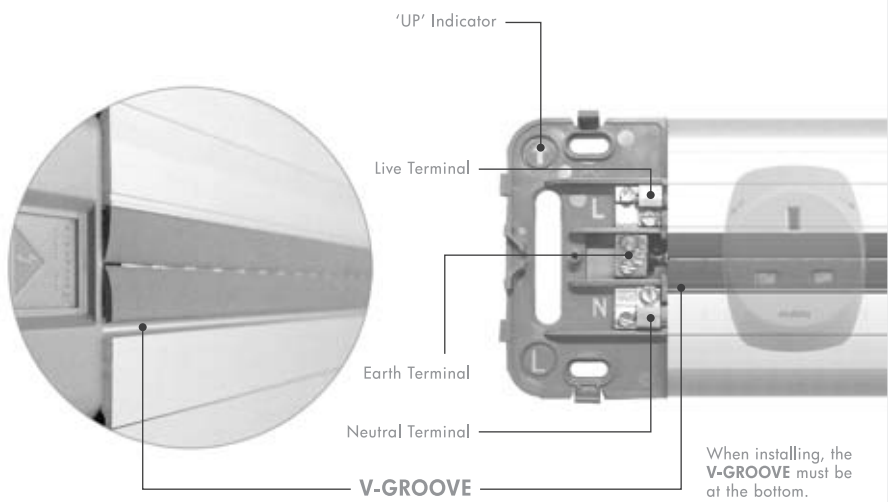
### CAUTION

- Keep away from fire.
- Keep away from water.
- Not for outdoor use.
- To be installed by a qualified electrician/installer.

### Preparation of Data Point

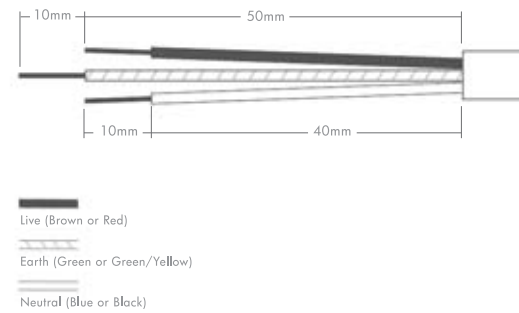
- 1 Mark and drill a hole for the data cable entry.
- 2 Route the data cable through to the desired location. To secure the track onto the surface, refer to "Type A Installation".
- 3 Picture above indicates the cutout dimension for the data slot. (Bending Line, 1mm, 20mm)
- 4 Prepare the data slot by making two cuts with a hacksaw.
- 5 Repeatedly bend the cutout aluminium piece along the bending line to detach it from the track cover.
- 6 Place the front covers in an upright position.
- 7 With the aid of the hammering plate, hammer gently to snap the front covers onto the track.
- 8 Power track is ready for installation of the data socket.
- 9 Refer to the Data Socket Housing user guide (found in data socket package) for the data socket installation instructions.

### Product Orientation



### Wiring Instructions

Prepare leads as shown:



- 1) Do not use in damp environment.
- 2) If in doubt, please consult a qualified electrician.

### PLEASE READ BEFORE INSTALLING

**INSTALLING PARTY**  
All Power Tracks must be installed by a qualified electrician.

**USE OF EARTH LEAKAGE CIRCUIT BREAKER (ELCB)**  
It is a mandatory requirement that all installations of electrical power source must be connected to an ELCB to provide protection against overload, short circuits and earth leakages faults. Failure to comply can be hazardous.

**INSTALLATION LOCATION**  
All Power Tracks must be installed at a location that complies with safety rules and regulations of respective country.

**INSTALLATION SURFACE**  
All Power Tracks must be installed on a flat surface.

**INSTALLATION CLEARANCE**  
SD Tracks should be installed with a recommended clearance of 18mm (for 'twist-on' accessories/for easy installation) from any cabinets or home fixtures (see Fig.1).

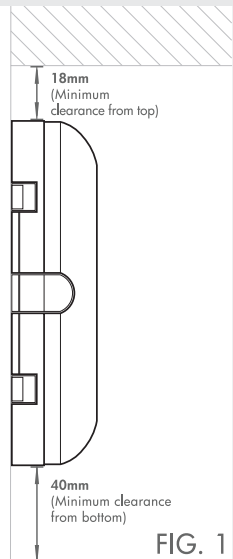
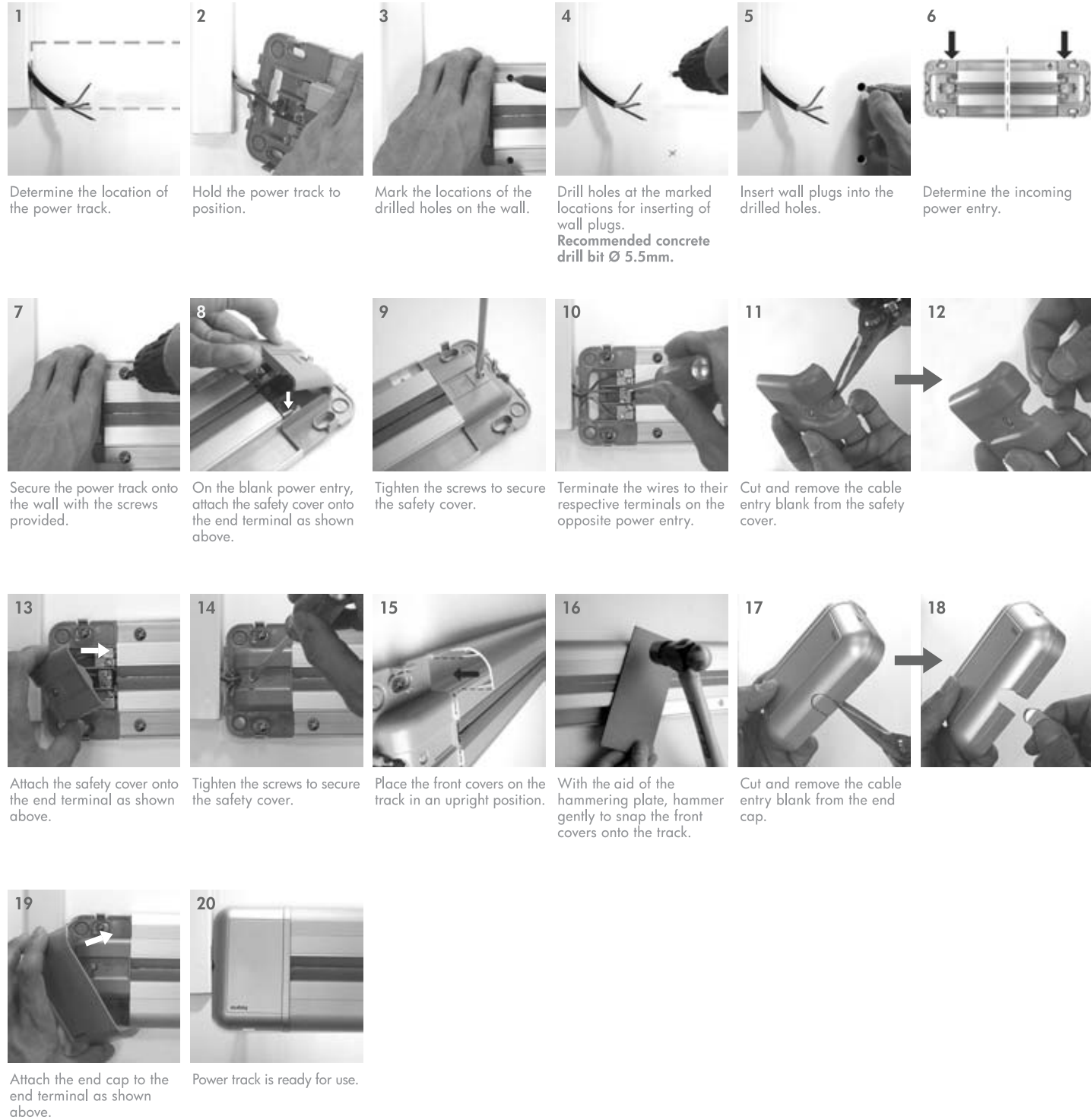


FIG. 1

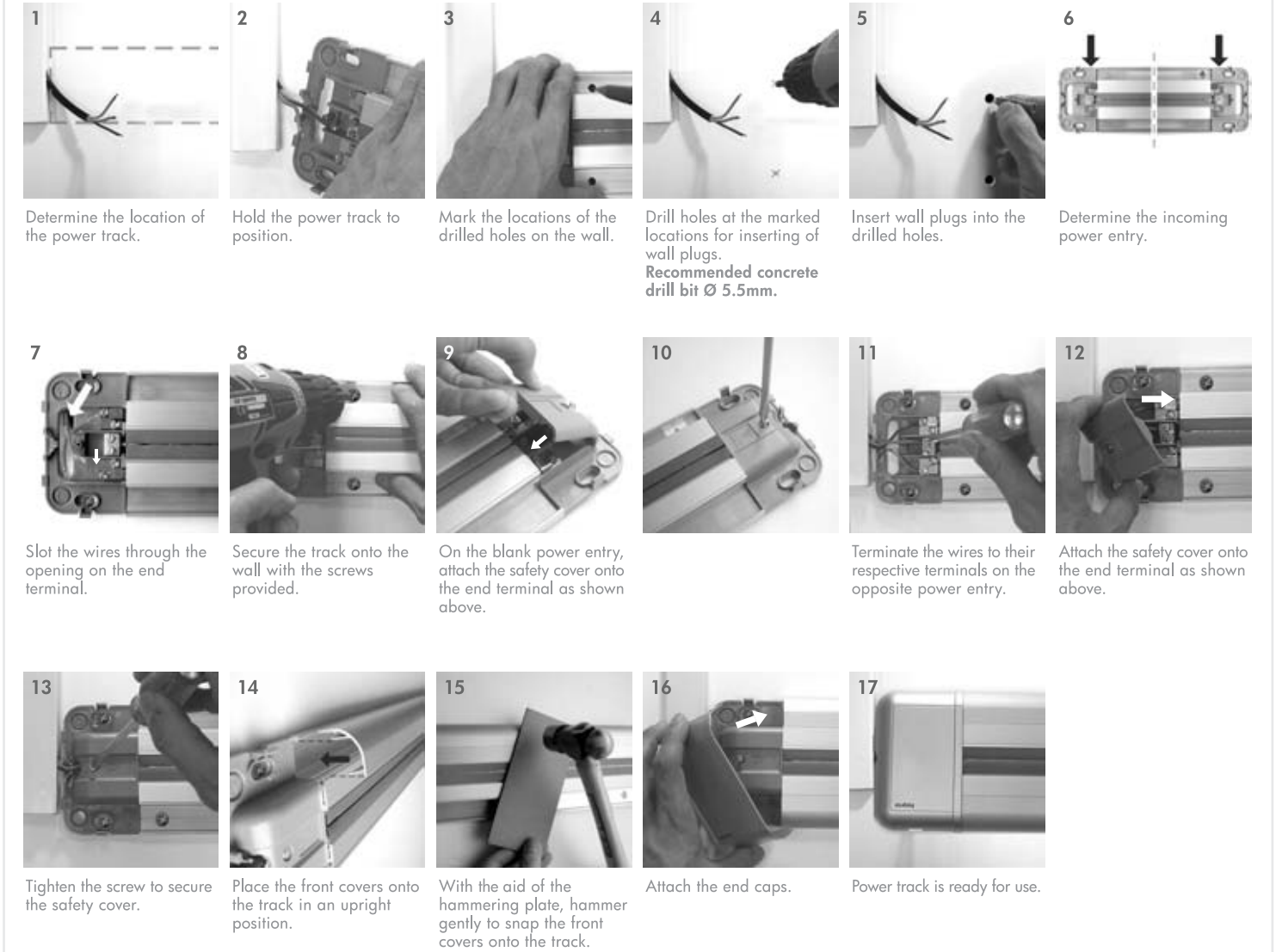
### Technical Specifications

Rated Voltage	: 250 V a.c. Single-phase
Rated Current	: 40 Amp maximum
Frequency	: 50Hz / 60Hz
Conditional Short Circuit Rating	: (MCB: In:40A Ue:400V), Type B (BS EN 60898-1) Prospective current: 6KA (BS EN 60439-2)
Rated Impulse Withstand Voltage	: 4000 V a.c.
Terminal Connecting Capacity (Live, Neutral and Earth)	: 4mm <sup>2</sup> to 10mm <sup>2</sup>
Ambient Operating Temperature	: -5°C to +40°C (not to exceed an average of more than 35°C in any 24 hours period)
Maximum Installation Altitude	: 2000 metres
Degree of Protection	: IP4X
Degree of Pollution	: 2 (Non-conductive pollution with temporary conductivity caused by condensation)
Track Material	: Aluminium
Insulation Material	: Polycarbonate

## Type A Installation - Wall Mounting with Cable Trunking



## Type B Installation - Direct Wall Mounting



## 3 Years Limited Warranty

1. Eubiq Pte Ltd ("Eubiq") warrants to the end-user of the product ("the Customer") that the product will be free from defects in materials and workmanship under normal use for a period of three (3) years from the date of retail purchase by the original end-user purchaser ("Warranty Period")
2. The Customer should access and refer to Eubiq's website at [www.eubiq.com](http://www.eubiq.com) for a list of Eubiq authorised dealers to contact for warranty service.
3. All requests for warranty service must be made within the Warranty Period, and be accompanied by the original dated proof of purchase.